

PEST ALERT !

National Park Service
U.S. Department of the Interior

Integrated Pest Management
Program, Biological Resources
Management Division



FIREWOOD: THREAT FROM INVASIVE BEETLES



Fire wood may contain pest beetles

Attention!

Firewood may contain non- native insects and plant diseases. Bringing firewood into the park from other areas may accidentally spread pest insects and diseases that threaten park resources and the health of our forests. Management of trees infected with these pests involves drastic measures - complete removal of all trees (infested and otherwise) in the immediate and surrounding areas.

The Asian long horned beetle and emerald ash borer are two insects that can be easily spread in firewood, which may look normal, but still be infested with the immature stage of these insects.

Firewood should not be brought into parks from infested areas unless accompanied by a certificate issued from USDA- APHIS, Plant Protection and Quarantine Program, stating that the source is free of infested wood and in compliance with quarantine regulations.

Quarantine status and certificate

Notice of quarantine prohibits interstate movement of certain plants and plant parts. Firewood, branches, green lumber, other wood exports, from quarantined states are regulated under the Animal and Plant Health Inspection Service (APHIS) to protect forest health and local economies and must be accompanied by a certificate issued from the USDA-APHIS, Plant Protection and Quarantine Program, stating that the source is "free of infested wood and under compliance". Items should not be imported from infested areas unless accompanied by a certificate indicating that such articles are free of the live quarantined pests. Ref: USDA Definitions and Guidelines Supplemental to Principles of Plant Quarantines.

Emerald ash borer beetle

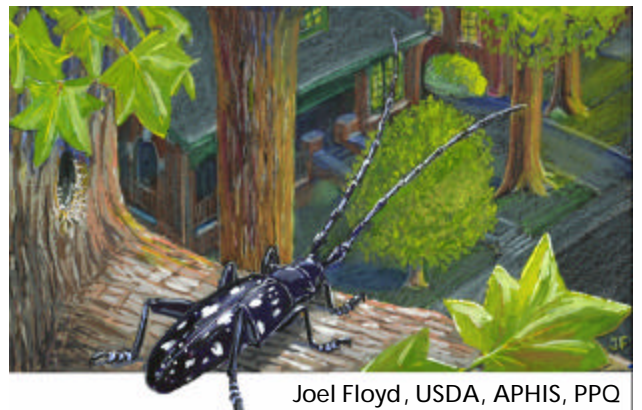
Quarantine: portions of Michigan, Indiana, and Ohio. For specific quarantines go to: <http://www.na.fs.fed.us/spfo/eab/>
<http://www.aphis.usda.gov/ppq/ep/eab/quarantine.html>



Joel Floyd, USDA, APHIS, PPO

Asian long horned beetle

Quarantine- portions of Illinois, New York, New Jersey. For specific quarantines go to: <http://www.aphis.usda.gov/lpa/issues/alb/alb-quar.html>



Joel Floyd, USDA, APHIS, PPO